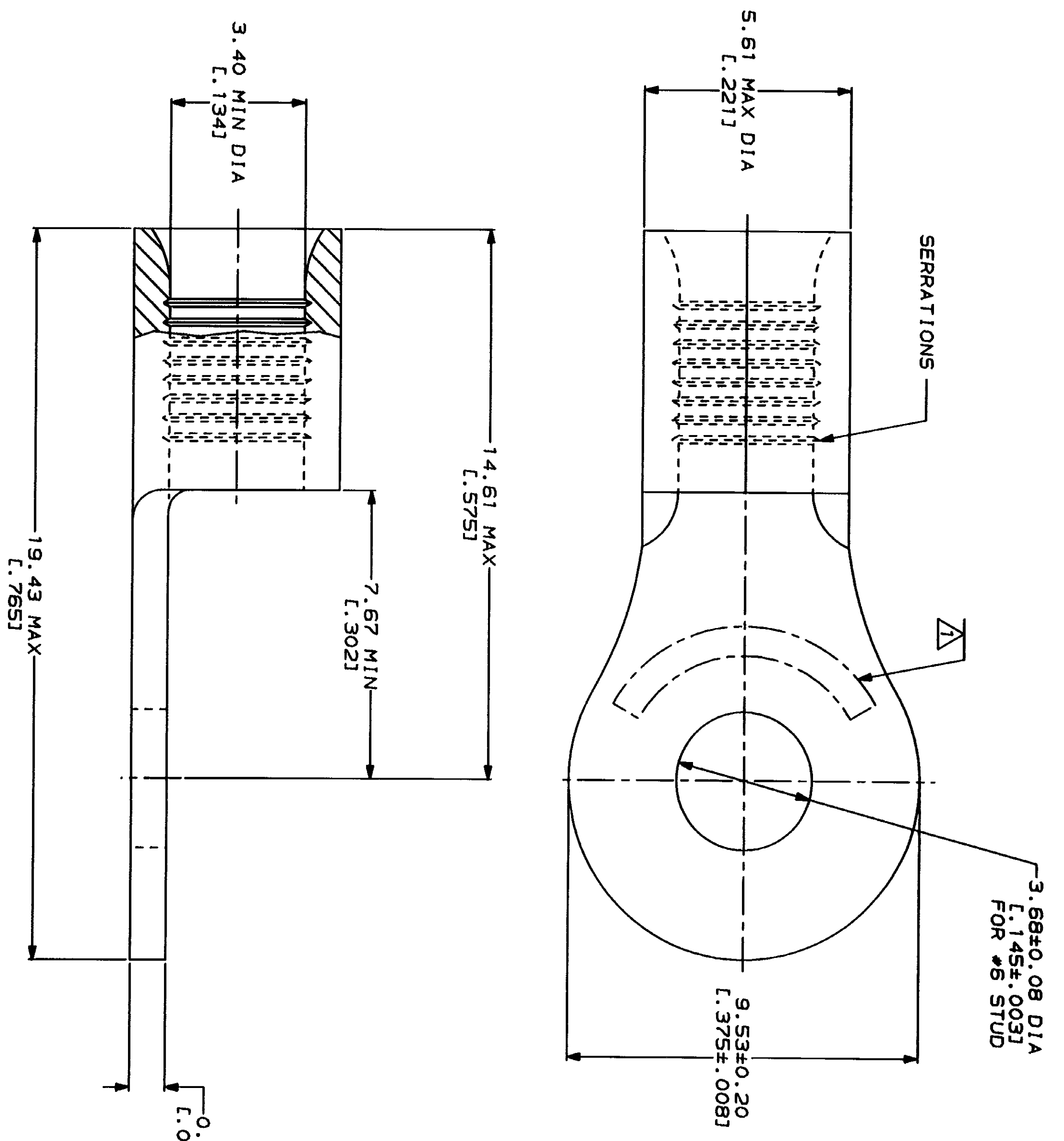


LOC	DIST	ZONE	LTR	DESCRIPTION	DATE	APPD
G	14			REVISED PER 0720-0230-93	2/25/94	DUP

**METRIOR**  
 DIMENSIONS LISTED IN MM [ INCHES ]

<b>AMP</b> WIRE RANGE 12-10 AWG STRANDED	<b>UL</b> E13288 Listed 12-10 AWG STRANDED
<b>LR7189</b> Certified	MILITARY P/N AND CLASS
NOT CERTIFIED	NOT APPLICABLE

△ STAMP AMP 12-10\* APPROX AS SHOWN



AMP INCORPORATED  
 CUSTOMER SERVICE SYSTEMS

FOR ADDITIONAL  
 PRODUCT INFORMATION OR  
 COPIES OF DRAWINGS  
 AND TECHNICAL DOCUMENTS  
 1-800-522-6752

FOR APPLICATION  
 TOOLING ASSISTANCE CENTER  
 1-800-722-1111

FOR ORDER ENTRY  
 1-800-526-5142

MAX RECOMMENDED OPERATING  
 TEMPERATURE: 170°C MAX

VOLTAGE RATING:  
 NOT APPLICABLE

WIRE CROSS SECTIONAL AREA RANGE:  
 2.62-6.64mm<sup>2</sup> [5,180-13,100] CIR MILS  
 STRANDED

DO NOT SCALE PRINT.  
 UNLESS SPECIFIED  
 DIMENSIONS IN MILLIMETERS  
 TOLERANCES ON:  
 2 PLG DEC ± .1  
 3 PLG DEC ± .1  
 ANGLES ± .1

MATERIAL:  
 COPPER PER  
 ASTM B-152  
 ANNEALED

FINISH:  
 TIN PLATE  
 0.00254 [L. 000100] MIN  
 THK PER MIL-T-10727

DR 2-9-93  
 TA BRINKMAN

CHK 2-9-93  
 DA PATTERSON

APPD 2-9-93  
 DE MILLER

APPD 2-9-93  
 JL NECKLEY

PRODUCT SPEC

APPLICATION SPEC

**AMP**  
 AMP Incorporated  
 Harrisburg, PA 17125-3608

TERMINAL, RING TONGUE,  
 BUDGET

SIZE CAGE CODE DRAWING NO  
 00779 31112

31112  
 PART NO

CUSTOMER DRAWING